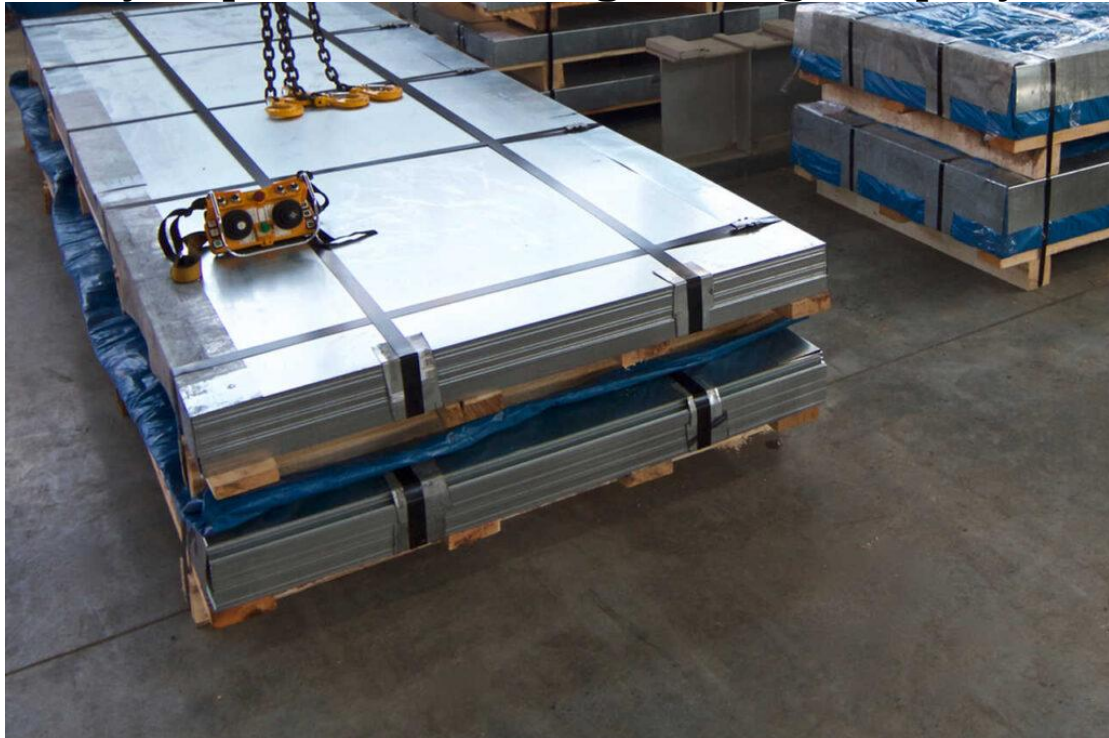


## Duplex Steel Sheets: The Strength of Innovation by Duplex Steel and Engineering Company



Duplex steel sheets are at the forefront of modern engineering and industrial applications, offering unmatched strength, corrosion resistance, and durability. Duplex Steel and Engineering Company takes pride in manufacturing high-quality [Duplex Steel Sheets](#), meeting the demands of various industries worldwide.

### What Are Duplex Steel Sheets?

Duplex steel is a type of stainless steel that combines the benefits of both austenitic and ferritic stainless steel structures. This dual-phase composition results in superior mechanical properties and excellent corrosion resistance. [Duplex Stainless Steel Sheet](#) are used in environments requiring materials that can withstand high stress, extreme temperatures, and harsh chemical exposure.

### Unique Features of Duplex Steel Sheets

**Exceptional Corrosion Resistance:** Duplex steel sheets resist corrosion in harsh environments, including marine, chemical, and industrial applications.

**High Strength:** With higher yield strength than traditional austenitic stainless steels, duplex steel sheets are ideal for demanding applications.

**Thermal Conductivity:** Duplex steel's thermal conductivity is better than austenitic stainless steels, making it suitable for heat transfer applications.

**Durability:** These sheets offer excellent resistance to wear and tear, ensuring a long service life.

**Cost Efficiency:** Their strength and corrosion resistance often allow for thinner sheets, reducing material costs without compromising performance.

## **Why Choose Duplex Steel and Engineering Company?**

At Duplex Steel and Engineering Company, we are committed to delivering excellence in every sheet of duplex steel we produce. Here's why customers trust us:

**Superior Quality Standards:** Our products meet international quality standards, ensuring reliability and performance.

**Custom Solutions:** We offer customized sizes and specifications to meet the unique needs of each client.

**State-of-the-Art Manufacturing:** Our advanced facilities and skilled workforce ensure precision and consistency in every product.

**Wide Range of Applications:** We cater to industries such as oil and gas, chemical processing, marine, construction, and more.

**Sustainability:** Our manufacturing processes prioritize environmental responsibility, minimizing waste and energy consumption.

## **A Commitment to Excellence**

Duplex Steel and Engineering Company has built a reputation for delivering products that set industry benchmarks. Our duplex steel sheets are manufactured with precision and subjected to rigorous quality checks to ensure they meet the highest standards.

## **Join the Future of Engineering**

**[Duplex Steel Sheets Manufacturers](#)** are transforming industries with their superior properties and versatility. Duplex Steel and Engineering Company invites you to experience the innovation and reliability of our products. Whether you are looking for materials for a large-scale project or a specialized application, we are here to provide solutions that exceed expectations.

**Visit us:- <https://duplexsteelengg.com/>**